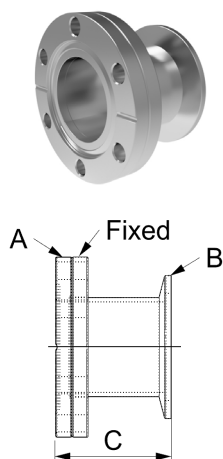


Adaptors

KF 转 CF 法兰 (直通) KF to CF Flange Adaptors

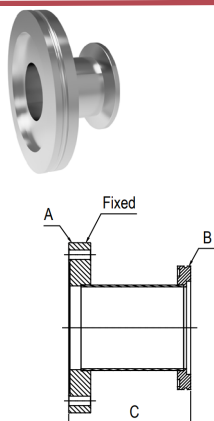
材料 Material : SS 304 SS 316L



Part Number	Flange Size	A	B	C
AD-KF10xCF133	KF10/CF1.33 (DN16)	CF1.33	KF10	44.5
AD-KF16xCF133	KF16/CF1.33 (DN18)	CF1.33	KF16	44.5
AD-KF16xCF275	KF16/CF2.75 (DN40)	CF2.75	KF16	45.2
AD-KF25xCF212	KF25/CF2.12 (DN25)	CF2.12	KF25	44.5
AD-KF25xCF275	KF25/CF2.75 (DN40)	CF2.75	KF25	45.2
AD-KF40xCF275	KF40/CF2.75 (DN40)	CF2.75	KF40	45.2
AD-KF40xCF338	KF40/CF3.38 (DN50)	CF3.38	KF40	45.7
AD-KF50xCF133	KF50/CF1.33 (DN16)	CF1.33	KF50	49.5
AD-KF50xCF275	KF50/CF2.75 (DN40)	CF2.75	KF50	49.5
AD-KF50xCF338	KF50/CF3.38 (DN50)	CF3.38	KF50	45.7
AD-KF50xCF450	KF50/CF4.50 (DN63)	CF4.50	KF50	49.5

ISOK 转 CF 法兰 (直通) ISOK to CF Flange Adaptors

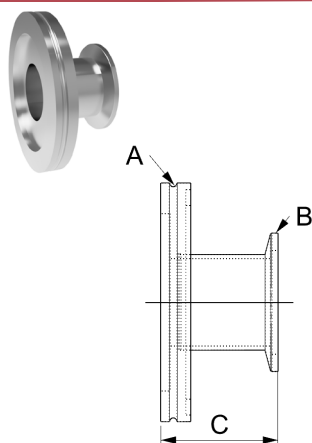
材料 Material : SS 304 SS 316L



Part Number	Flange Size	A	B	C
AD-IS063xCF450	IS063/CF4.50 (DN63)	CF4.50	IS063	110.0
AD-IS080xCF462	IS080/CF4.62 (DN80)	CF4.62	IS080	110.0
AD-IS080xCF600	IS080/CF6.00 (DN100)	CF6.00	IS080	110.0
AD-IS0100xCF 600	IS0100/CF6.00 (DN100)	CF6.00	IS0100	111.0
AD-IS0160xCF 800	IS0160/CF8.00 (DN160)	CF8.00	IS0160	113.0
AD-IS0200xCF1000	IS0200/CF10.00 (DN200)	CF10.00	IS0200	100.0

ISOK 转 KF 法兰 (直通) ISOK to KF Flange Adaptors

材料 Material : SS 304 SS 316L

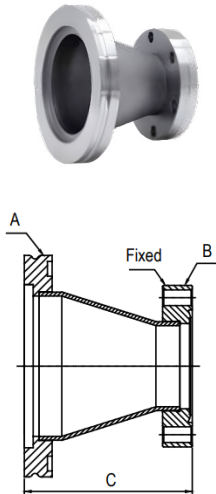


Part Number	Flange Size	A	B	C
AD-IS063xKF25	IS063/KF25	IS063	KF25	46.5
AD-IS063xKF40	IS063/KF40	IS063	KF40	46.3
AD-IS063xKF50	IS063/KF50	IS063	KF50	46.3
AD-IS080xKF40	IS080/KF40	IS080	KF40	46.3
AD-IS080xKF50	IS080/KF50	IS080	KF50	46.3
AD-IS0100xKF25	IS0100/KF25	IS0100	KF25	46.3
AD-IS0100xKF40	IS0100/KF40	IS0100	KF40	46.3
AD-IS0100xKF50	IS0100/KF50	IS0100	KF50	46.3

Adaptors

ISOK 转 CF 法兰 (锥形) ISO to CF Flange Conical Adaptors

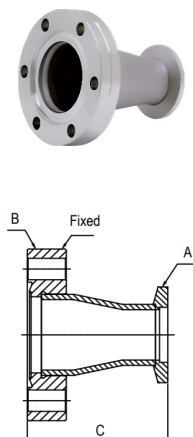
材料 Material : SS 304 SS 316L



Part Number	Flange Size	A	B	C
ADC-ISO63xCF275	ISO63/CF2.75 (DN40)	ISO63	CF2.75	71.9
ADC-ISO63xCF338	ISO63CF/3.38 (DN50)	ISO63	CF3.38	72.3
ADC-ISO63xCF462	ISO63/CF4.62 (DN80)	ISO63	CF4.62	108.0
ADC-ISO63xCF600	ISO63/CF6.00 (DN100)	ISO63	CF6.00	109.5
ADC-ISO80xCF275	ISO80/CF2.75 (DN40)	ISO80	CF2.75	103.7
ADC-ISO80xCF338	ISO80/CF3.38 (DN50)	ISO80	CF3.38	104.1
ADC-ISO80xCF450	ISO80/CF4.50 (DN63)	ISO80	CF4.50	107.9
ADC-ISO80xCF600	ISO80/CF6.00 (DN100)	ISO80	CF6.00	109.5
ADC-ISO100xCF338	ISO100/CF3.38 (DN50)	ISO100	CF3.38	104.1
ADC-ISO100xCF450	ISO100/CF4.50 (DN63)	ISO100	CF4.50	107.9
ADC-ISO100xCF462	ISO100/CF4.62 (DN80)	ISO100	CF4.62	108.0

KF 转 CF 法兰 (锥形) KF to CF Flange Conical Adaptors

材料 Material : SS 304 SS 316L

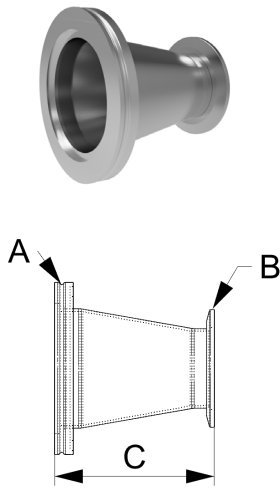


Part Number	Flange Size	A	B	C
ADC-KF16xCF212	KF16/CF2.12 (DN25)	KF 16	CF2.12	42.9
ADC-KF16xCF275	KF16/CF2.75 (DN40)	KF 16	CF2.75	69.3
ADC-KF25xCF133	KF25/CF1.33 (DN16)	KF 25	CF1.33	43.2
ADC-KF25xCF275	KF25/CF2.75 (DN40)	KF 25	CF2.75	69.3
ADC-KF25xCF338	KF25/CF3.38 (DN50)	KF 25	CF3.38	69.9
ADC-KF40xCF133	KF40/CF1.33 (DN16)	KF 40	CF1.33	68.6
ADC-KF40xCF212	KF40/CF2.12 (DN25)	KF 40	CF2.12	68.3
ADC-KF40xCF338	KF40/CF3.38 (DN50)	KF 40	CF3.38	69.9
ADC-KF40xCF450	KF40/CF4.50 (DN63)	KF 40	CF4.50	73.7
ADC-KF40xCF462	KF40/CF4.62 (DN80)	KF 40	CF4.62	105.5
ADC-KF50xCF212	KF50/CF2.12 (DN25)	KF 50	CF2.12	68.3
ADC-KF50xCF275	KF50/CF2.75 (DN40)	KF 50	CF2.75	69.3
ADC-KF50xCF450	KF50/CF4.50 (DN63)	KF 50	CF4.50	73.7
ADC-KF50xCF462	KF50/CF4.62 (DN80)	KF 50	CF4.62	105.5
ADC-KF50xCF600	KF50/CF6.00 (DN100)	KF 50	CF6.00	106.9

Adaptors

ISOK 转 KF 法兰 (锥形) ISO to KF Flange Conical Adaptors

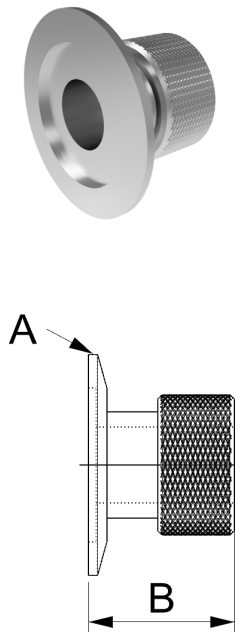
材料 Material : SS 304L



Part Number	Flange Size	A	B	C
ADC-ISO63xKF40	ISO63/KF40	ISO63	KF40	70.4
ADC-ISO63xKF50	ISO63/KF50	ISO63	KF50	70.4
ADC-ISO80xKF40	ISO80/KF40	ISO80	KF40	102.2
ADC-ISO80xKF50	ISO80/KF50	ISO80	KF50	102.2
ADC-ISO100xKF50	ISO100/KF50	ISO100	KF50	102.2

KF 转快速接口 (锥形) KF Flanges To Quick Couplings With Viton O-Rings

材料 Material : SS 304L

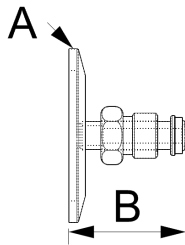


Part Number	Size	Tube Size	A	B
AD-QC-KF10x050	KF10-1/2"	1/2"	KF10	38.1
AD-QC-KF16x025	KF16-1/4"	1/4"	KF16	35.6
AD-QC-KF16x050	KF16-1/2"	1/2"	KF16	38.1
AD-QC-KF16x075	KF16-3/4"	3/4"	KF16	45.7
AD-QC-KF25x050	KF25-1/2"	1/2"	KF25	38.1
AD-QC-KF25x062	KF25-5/8"	5/8"	KF25	43.2
AD-QC-KF25x075	KF25-3/4"	3/4"	KF25	45.7
AD-QC-KF25x100	KF25-1"	1"	KF25	50.8
AD-QC-KF25x112	KF25-1 1/8"	1 1/8"	KF25	50.8
AD-QC-KF40x050	KF40-1/2"	1/2"	KF40	37.6
AD-QC-KF40x075	KF40-3/4"	3/4"	KF40	45.7
AD-QC-KF40x100	KF40-1"	1"	KF40	50.8
AD-QC-KF40x112	KF40-1 1/8"	1 1/8"	KF40	50.8
AD-QC-KF40x125	KF40-1 1/4"	1 1/4"	KF40	50.8
AD-QC-KF40x138	KF40-1 3/8"	1 3/8"	KF40	53.3
AD-QC-KF40x150	KF40-1 1/2"	1 1/2"	KF40	61.0
AD-QC-KF50x050	KF50-1/2"	1/2"	KF50	38.1
AD-QC-KF50x075	KF50-3/4"	3/4"	KF50	45.7
AD-QC-KF50x100	KF50-1"	1"	KF50	50.8
AD-QC-KF50x112	KF50-1 1/8"	1 1/8"	KF50	50.8
AD-QC-KF50x150	KF50-1 1/2"	1 1/2"	KF50	61.0
AD-QC-KF50x200	KF50-2"	2"	KF50	61.0

Adaptors

KF 转 VCR 公头 KF Flanges to Male VCRs

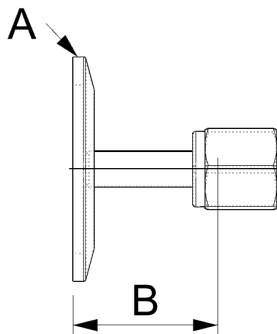
材料 Material : SS 304L SS 316L



Part Number	Size	A	B
AD-VCRM-KF16x025	KF16x $1/4$ "	KF16	37.1
AD-VCRM-KF16x038	KF16x $3/8$ "	KF16	41.9
AD-VCRM-KF16x050	KF16x $1/2$ "	KF16	41.9
AD-VCRM-KF25x025	KF25x $1/4$ "	KF25	37.1
AD-VCRM-KF25x038	KF25x $3/8$ "	KF25	41.9
AD-VCRM-KF25x050	KF25x $1/2$ "	KF25	41.9
AD-VCRM-KF25x075	KF25x $3/4$ "	KF25	55.4
AD-VCRM-KF40x025	KF40x $1/4$ "	KF40	37.1
AD-VCRM-KF40x038	KF40x $3/8$ "	KF40	41.9
AD-VCRM-KF40x050	KF40x $1/2$ "	KF40	41.9
AD-VCRM-KF40x075	KF40x $3/4$ "	KF40	55.4
AD-VCRM-KF50x025	KF50x $1/4$ "	KF50	37.1
AD-VCRM-KF50x038	KF50x $3/8$ "	KF50	41.9
AD-VCRM-KF50x050	KF50x $1/2$ "	KF50	41.9
AD-VCRM-KF50x075	KF50x $3/4$ "	KF50	55.4

KF 转 VCR 母头 KF Flanges to Female VCRs

材料 Material : SS 304L SS 316L

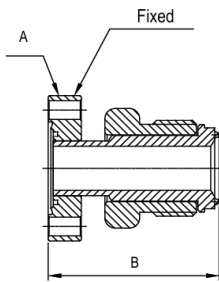


Part Number	Flange Size	A	B
AD-VCRF-KF16X025	KF16x $1/4$ "	KF16	37.1
AD-VCRF-KF16X038	KF16x $3/8$ "	KF16	41.9
AD-VCRF-KF16X050	KF16x $1/2$ "	KF16	41.9
AD-VCRF-KF25X025	KF25x $1/4$ "	KF25	37.1
AD-VCRF-KF25X038	KF25x $3/8$ "	KF25	41.9
AD-VCRF-KF25X050	KF25x $1/2$ "	KF25	41.9
AD-VCRF-KF25X075	KF25x $3/4$ "	KF25	55.4
AD-VCRF-KF40X025	KF40x $1/4$ "	KF40	37.1
AD-VCRF-KF40X038	KF40x $3/8$ "	KF40	41.9
AD-VCRF-KF40X050	KF40x $1/2$ "	KF40	41.9
AD-VCRF-KF40X075	KF40x $3/4$ "	KF40	55.4
AD-VCRF-KF50X025	KF50x $1/4$ "	KF50	37.1
AD-VCRF-KF50X038	KF50x $3/8$ "	KF50	41.9
AD-VCRF-KF50X050	KF50x $1/2$ "	KF50	41.9
AD-VCRF-KF50X075	KF50x $3/4$ "	KF50	55.4

Adaptors

CF 转 VCR 公头 CF Flanges to Male VCRs

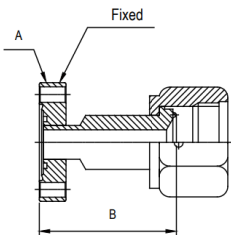
材料 Material : SS 304L SS 316L



Part Number	Size	A	B
AD-VCRM-CF133x025	CF1.33" (DN16) x ¹ / ₄ "	CF1.33	36.3
AD-VCRM-CF133x038	CF1.33" (DN16) x ³ / ₈ "	CF1.33	39.3
AD-VCRM-CF133x050	CF1.33" (DN16) x ¹ / ₂ "	CF1.33	39.3
AD-VCRM-CF275x025	CF2.75" (DN40) x ¹ / ₄ "	CF2.75	38.6
AD-VCRM-CF275x038	CF2.75" (DN40) x ³ / ₈ "	CF2.75	43.4
AD-VCRM-CF275x050	CF2.75" (DN40) x ¹ / ₂ "	CF2.75	43.4

CF 转 VCR 母头 CF Flanges to Female VCRs

材料 Material : SS 304L SS 316L

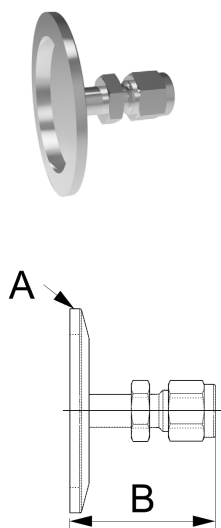


Part Number	Size	A	B
AD-VCRF-CF133x025	CF1.33" (DN16) x ¹ / ₄ "	CF1.33	36.3
AD-VCRF-CF133x038	CF1.33" (DN16) x ³ / ₈ "	CF1.33	39.3
AD-VCRF-CF133x050	CF1.33" (DN16) x ¹ / ₂ "	CF1.33	39.3
AD-VCRF-CF275x025	CF2.75" (DN40) x ¹ / ₄ "	CF2.75	38.6
AD-VCRF-CF275x038	CF2.75" (DN40) x ³ / ₈ "	CF2.75	43.4
AD-VCRF-CF275x050	CF2.75" (DN40) x ¹ / ₂ "	CF2.75	43.4

Adaptors

KF 转卡套接头 KF Flanges to Two-Ferrule Fittings

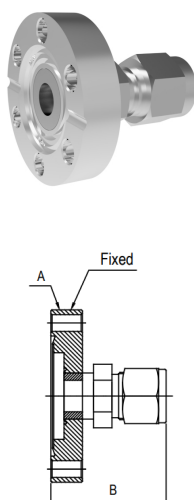
材料 Material : SS 304L



Part Number	Size	A	B
AD-SWG-KF10x025	KF10-1/4"	30.0	33.3
AD-SWG-KF16x025	KF16x1/4"	30.0	39.4
AD-SWG-KF16x038	KF16x3/8"	30.0	41.4
AD-SWG-KF16x050	KF16x1/2"	30.0	50.0
AD-SWG-KF25x025	KF25x1/4"	39.9	39.4
AD-SWG-KF25x038	KF25x3/8"	39.9	41.4
AD-SWG-KF25x050	KF25x1/2"	39.9	50.0
AD-SWG-KF25x075	KF25x3/4"	39.9	52.8
AD-SWG-KF25x100	KF25-1"	39.9	65.7
AD-SWG-KF40x025	KF40x1/4"	54.9	39.4
AD-SWG-KF40x038	KF40x3/8"	54.9	41.4
AD-SWG-KF40x050	KF40x1/2"	54.9	50.0
AD-SWG-KF40x075	KF40x3/4"	54.9	52.8
AD-SWG-KF40x100	KF40-1"	54.9	65.7
AD-SWG-KF50x025	KF50x1/4"	74.9	39.4
AD-SWG-KF50x038	KF50x3/8"	74.9	41.4
AD-SWG-KF50x050	KF50x1/2"	74.9	50.0
AD-SWG-KF50x075	KF50x3/4"	74.9	52.8
AD-SWG-KF50x100	KF50-1"	74.9	65.7

CF 转卡套接头 CF Flanges to Two-Ferrule Fittings

材料 Material : SS 304L

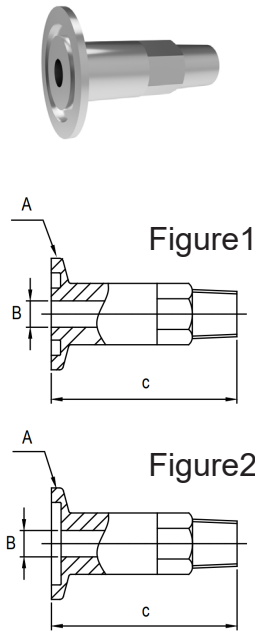


Part Number	Size	A	B
AD-SWG-CF133x025	CF1.33" (DN16) x1/4"	CF1.33	34.8
AD-SWG-CF133x038	CF1.33" (DN16) x3/8"	CF1.33	42.1
AD-SWG-CF133x050	CF1.33" (DN16) x1/2"	CF1.33	43.2
AD-SWG-CF275x025	CF2.75" (DN40) x1/4"	CF2.75	38.8
AD-SWG-CF275x038	CF2.75" (DN40) x3/8"	CF2.75	42.9
AD-SWG-CF275x050	CF2.75" (DN40) x1/2"	CF2.75	46.4
AD-SWG-CF275x075	CF2.75" (DN40) x3/4"	CF2.75	55.8
AD-SWG-CF275x100	CF2.75" (DN40) -1"	CF2.75	67.5

Adaptors

KF 转 NPT 外螺纹 KF Flanges to Male NPT Adaptors

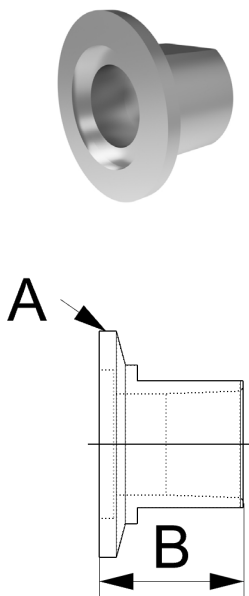
材料 Material : SS 304L



Part Number	Size	A	B	C	Figure
AD-NPTM-KF16x012	KF16- ¹ / ₈ "NPT	KF16	4.70	40.0	1
AD-NPTM-KF16x025	KF16- ¹ / ₄ "NPT	KF16	7.10	50.0	1
AD-NPTM-KF25x012	KF25- ¹ / ₈ "NPT	KF25	4.70	40.0	2
AD-NPTM-KF25x025	KF25- ¹ / ₄ "NPT	KF25	7.10	50.0	2
AD-NPTM-KF25x050	KF25- ¹ / ₂ "NPT	KF25	11.90	75.0	2
AD-NPTM-KF25x075	KF25- ³ / ₄ "NPT	KF25	15.90	75.0	2
AD-NPTM-KF40x025	KF40- ¹ / ₄ "NPT	KF40	7.10	50.0	2
AD-NPTM-KF40x050	KF40- ¹ / ₂ "NPT	KF40	11.90	75.0	2
AD-NPTM-KF40x075	KF40- ³ / ₄ "NPT	KF40	15.90	75.0	2
AD-NPTM-KF50x025	KF50- ¹ / ₄ "NPT	KF50	7.10	50.0	2
AD-NPTM-KF50x050	KF50- ¹ / ₂ "NPT	KF50	11.90	75.0	2
AD-NPTM-KF50x075	KF50- ³ / ₄ "NPT	KF50	15.90	75.0	2

KF 转 NPT 内螺纹 KF Flanges to Female NPT Adaptors

材料 Material : SS 304L

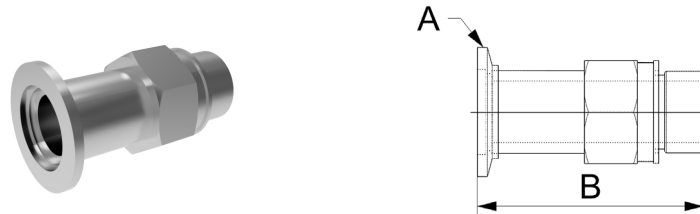


Part Number	Size	A	B
AD-NPTF-KF10x012	KF10- ¹ / ₈ "NPT	KF10	19.1
AD-NPTF-KF10x025	KF10- ¹ / ₄ "NPT	KF10	19.1
AD-NPTF-KF16x012	KF16- ¹ / ₈ "NPT	KF16	19.1
AD-NPTF-KF16x025	KF16- ¹ / ₄ "NPT	KF16	19.1
AD-NPTF-KF25x012	KF25- ¹ / ₈ "NPT	KF25	19.1
AD-NPTF-KF25x025	KF25- ¹ / ₄ "NPT	KF25	19.1
AD-NPTF-KF25x038	KF25- ³ / ₈ "NPT	KF25	19.1
AD-NPTF-KF25x050	KF25- ¹ / ₂ "NPT	KF25	25.4
AD-NPTF-KF40x012	KF40- ¹ / ₈ "NPT	KF40	25.4
AD-NPTF-KF40x025	KF40- ¹ / ₄ "NPT	KF40	25.4
AD-NPTF-KF40x050	KF40- ¹ / ₂ "NPT	KF40	25.4
AD-NPTF-KF40x075	KF40- ³ / ₄ "NPT	KF40	25.4
AD-NPTF-KF50x012	KF50- ¹ / ₈ "NPT	KF50	25.4
AD-NPTF-KF50x025	KF50- ¹ / ₄ "NPT	KF50	25.4
AD-NPTF-KF50x050	KF50- ¹ / ₂ "NPT	KF50	25.4
AD-NPTF-KF50x075	KF50- ³ / ₄ "NPT	KF50	25.4

Adaptors

KF 转外螺纹 KF Flanges to Welch Pump Adaptors

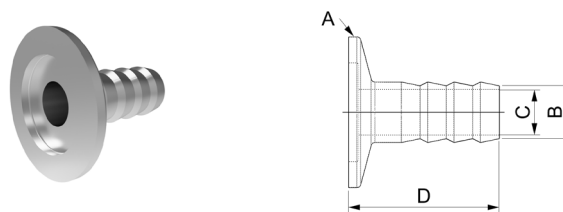
材料 Material : SS 304L



Part Number	Size	A	B
AD-WP-KF16x062	KF16-WP1	KF16	45.0
AD-WP-KF16x075	KF16-WP2	KF16	65.0
AD-WP-KF25x100	KF25-WP1	KF25	70.1
AD-WP-KF40x150	KF40-WP1	KF40	65.0
AD-WP-KF40x175	KF40-WP2	KF40	65.3

KF 转管喉接头 KF Flanges to Hose Nozzles

材料 Material : SS 304L



Part Number	Size	A	B	C
AD-HS-KF10x008M	KF10-8mm	KF10	8.0	4.0
AD-HS-KF10x012M	KF10-12mm	KF10	12.0	8.0
AD-HS-KF16x008M	KF16-8mm	KF16	8.0	4.0
AD-HS-KF16x012M	KF16-12mm	KF16	12.0	8.0
AD-HS-KF25x008M	KF25-8mm	KF25	8.0	4.0
AD-HS-KF25x012M	KF25-12mm	KF25	12.0	8.0
AD-HS-KF25x016M	KF25-16mm	KF25	16.0	12.0
AD-HS-KF25x020M	KF25-20mm	KF25	20.0	16.0
AD-H8-KF40K012M	KF40-12mm	KF40	12.0	8.0
AD-HS-KF40x016M	KF40-16mm	KF40	16.0	12.0
AD-HS-KF40x020M	KF40-20mm	KF40	20.0	16.0
AD-HS-KF40x025M	KF40-25mm	KF40	25.0	20.0
AD-HS-KF50x025M	KF50-25mm	KF50	25.0	20.0