



ISO 法兰和管件

ISO Flanges & Fittings

赛米瑟 ISO 是专门为 2 寸以上管径设计，ISO 法兰可以分为 ISO-K 和 ISO-F 两种规格，ISO-K 是用勾型配件进行紧固，ISO-F 是采用螺栓紧固。

密封方式与 KF 法兰相同，采用中心支架 O 型圈进行密封，ISO 管件的真空度可以低至 1×10^{-8} Torr，最高耐温到达 200 度。

ISOK 和 ISOF 法兰管件都开发了各种国际通用的转接头、三通、弯头等标准件，可以满足真空系统各种各样的组合要求，管件的拆装方便快捷，不需要专业工具，配件均能重复使用。

SSV ISO flanges are designed to fit tubes sizes with an OD above 2 inches and comply with the International Standards Organization specifications so are 100% compatible with other manufacturers' flange design.

There are two types of flange assemblies, claw clamp type and bolt flange type and both utilize an O-ring which is held in place by a centering ring to achieve a vacuum seal up to 1×10^{-8} Torr.

The bolt type flanges are assembled by using a set of bolts to fix the position of the mating flanges, whereas the claw clamp flanges use double claw clamps to hold two flanges together. In addition, the use of the claw clamps means that mating flanges can be connected together in any orientation. A wide range of adaptors for connection to CF or KF flanges can be found in the Adaptor section.

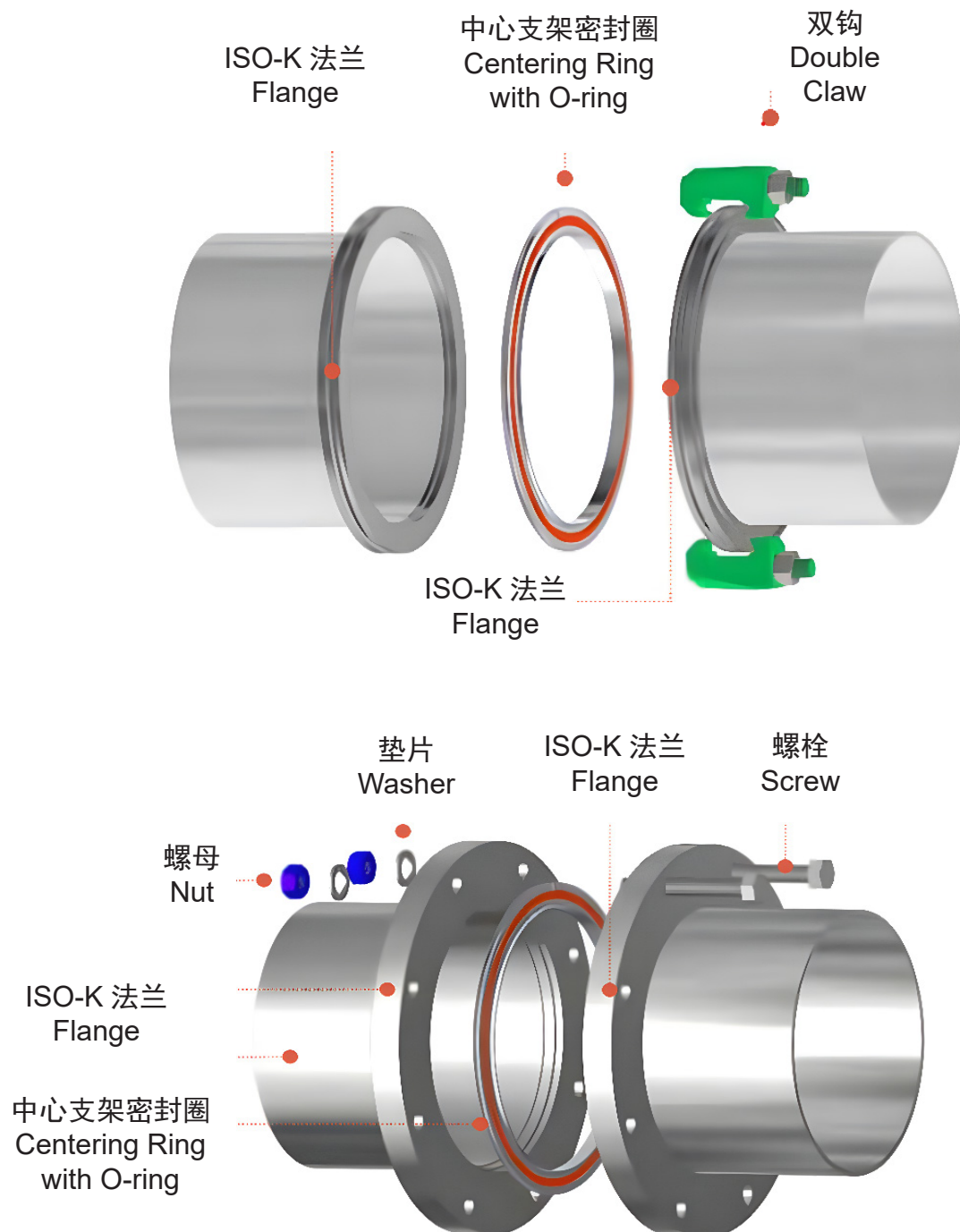


标准规格 Standard Specification

真空效率 Vacuum Rate	高真空 High Vacuum
材料 Material	SS 304, SS 316L or Aluminum
法兰尺寸 Flange Sizes	ISO63~ISO630
管材尺寸 Tube Sizes	2.5"~26.0" Surface Finish: Bead-blast and Polished
真空范围 Vacuum Range	760 Torr ~ 1×10^{-8} Torr
垫片材料 Gasket Material	FKM, FFKM
温度范围 Temperature Range	<200° C (150° C sustained)

ISO 法兰的装配

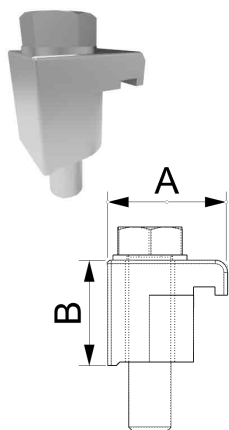
ISO Flanges Assembly



ISO

单钩 (不锈钢) ISO-K Single Claw

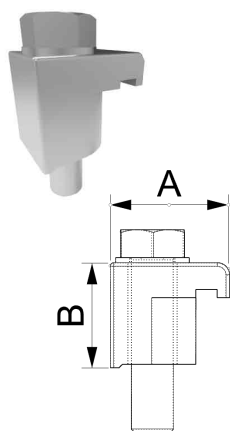
材料 Material : SS 304



Part Number	Size	A	B	Thread Size
ISOK-SC-63100M	ISO63-ISO100	24.1	22.5	M8x35L
ISOK-SC-160250M	ISO160-ISO250	29.2	23.0	M10x35L
ISOK-SC-320500M	ISO320-ISO500	34.0	30.0	M12x50L
ISOK-SC-630M	ISO630	37.0	41.5	M12x50L

单钩 (铝合金) ISO-K Single Claw

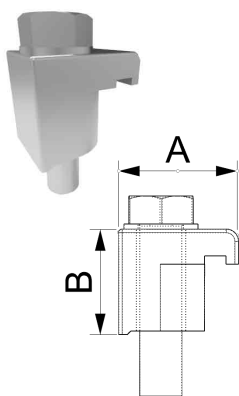
材料 Material : 铝 Aluminum



Part Number	Size	A	B	Thread Size
ISOK-SC-63100M-AL	ISO63-ISO100	24.1	22.5	M8x35L
ISOK-SC-63100-AL	ISO63-ISO100	24.1	22.5	5/16-18x38L
ISOK-SC-160250M-AL	ISO160-ISO250	27.5	23.5	M10x35L
ISOK-SC-160250-AL	ISO160-ISO250	27.5	23.5	5/16-18x38L
ISOK-SC-320500M-AL	ISO320-ISO500	30.0	30.0	M12x50L

单钩 (镀锌) ISO-K Single Claw

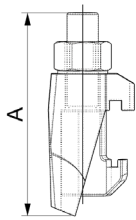
材料 Material : 镀锌钢板 Zinc Plated Steel



Part Number	Size	A	B	Thread Size
ISOK-SC-63100M-ZP	ISO63-ISO100	24.1	22.5	M8x35L
ISOK-SC-160250M-ZP	ISO160-ISO250	27.5	23.5	M10x35L
ISOK-SC-320500M-ZP	ISO320-ISO500	30.0	30.0	M12x50L

双钩 (不锈钢) ISO-K DoubleClaw

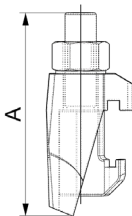
材料 Material : SS 304



Part Number	Size	A	Bolt Size
ISOK-DC-63250M	IS063-IS0250	60.0	M10
ISOK-DC-320500M	IS0320-IS0500	76.5	M12

双钩 (镀锌) ISO-K DoubleClaw

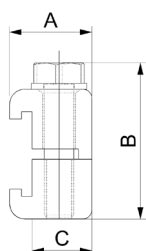
材料 Material : 镀锌钢板 Zinc Plated Steel



Part Number	Size	A	Bolt Size
ISOK-DC-63250M-ZP	IS063-IS0250	60.0	M10
ISOK-DC-320500M-ZP	IS0320-IS0500	76.5	M12

双钩 (铝合金) ISO-K DoubleClaw

材料 Material : 铝 Aluminum

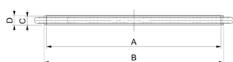


Part Number	Size	A	B	C	Thread Size
ISOK-DC-63100M-AL	IS063-IS0100	24.0	50.0	16.5	M8x45L
ISOK-DC-63100-AL	IS063-IS0100	24.0	50.0	16.5	5/16-18x45L
ISOK-DC-160250M-AL	IS0160-IS0250	27.5	51.6	20.0	M10x45L
ISOK-DC-160250-AL	IS0160-IS0250	27.5	51.6	20.0	5/16-18x45L
ISOK-DC-320500M-AL	IS0320-IS0500	34.0	60.0	26.1	M12x60L

ISO

中心支架 ISO Centering Rings

材料 Material : SS 304 SS 316L 铝 Aluminum

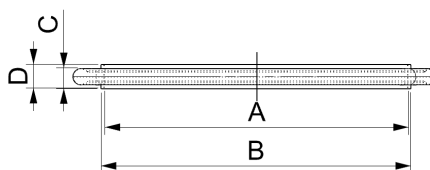


Part Number (FKM)	Part Number (NBR)	Size	A	B	C	D
ISO-CR-63	ISO-CR0-63-AL	ISO63	68.0	70.0	3.9	8.0
ISO-CR-80	ISO-CR0-80-AL	ISO80	81.0	83.0	3.9	8.0
ISO-CR-100	ISO-CR0-100-AL	ISO100	100.0	102.0	3.9	8.0
ISO-CR-160	ISO-CR0-160-AL	ISO160	151.0	153.0	3.9	8.0
ISO-CR-200	ISO-CR0-200-AL	ISO200	210.0	213.0	3.9	8.0
ISO-CR-250	ISO-CR0-250-AL	ISO250	256.0	261.0	3.9	8.0
ISO-CR-320	ISO-CR0-320-AL	ISO320	311.2	316.5	5.5	14.0
ISO-CR-400	ISO-CR0-400-AL	ISO400	392.9	398.0	5.5	14.0

中心支架 O 型圈 ISO Centering Rings with O-Rings

中心环材料 Centering Ring Material : SS 304

O 型圈 O-ring Material : FKM NBR

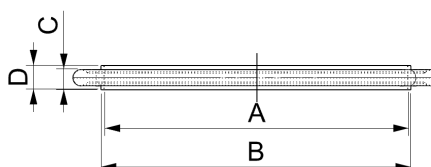


Part Number (FKM)	Part Number (NBR)	Size	A	B	C	D
ISO-CR0-63	ISO-CR0-63-NB	ISO63	68.0	70.0	3.9	8.0
ISO-CR0-80	ISO-CR0-80-NB	ISO80	81.0	83.0	3.9	8.0
ISO-CR0-100	ISO-CR0-100-NB	ISO100	100.0	102.0	3.9	8.0
ISO-CR0-160	ISO-CR0-160-NB	ISO160	151.0	153.0	3.9	8.0
ISO-CR0-200	ISO-CR0-200-NB	ISO200	210.0	213.0	3.9	8.0
ISO-CR0-250	ISO-CR0-250-NB	ISO250	256.0	261.0	3.9	8.0
ISO-CR0-320	ISO-CR0-320-NB	ISO320	311.2	316.5	5.5	14.0
ISO-CR0-400	ISO-CR0-400-NB	ISO400	392.9	398.0	5.5	14.0

中心支架密封圈 (铝合金) ISO Centering Rings with O-Rings, Aluminum

中心环材料 Centering Ring Material : 铝 Aluminum

O 型圈 O-ring Material : FKM NBR



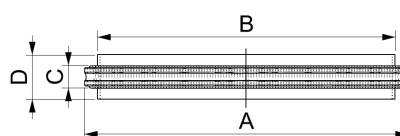
Part Number (FKM)	Part Number (NBR)	Size	A	B	C	D
ISO-CR0-63-AL	ISO-CR0-63-AL-NB	ISO63	68.0	70.0	3.9	8.0
ISO-CR0-80-AL	ISO-CR0-80-AL-NB	ISO80	81.0	83.0	3.9	8.0
ISO-CR0-100AL	ISO-CR0-100-AL-NB	ISO100	100.0	102.0	3.9	8.0
ISO-CR0-160-AL	ISO-CR0-160-AL-NB	ISO160	151.0	153.0	3.9	8.0
ISO-CR0-200-AL	ISO-CR0-200-AL-NB	ISO200	210.0	213.0	3.9	8.0
ISO-CR0-250-AL	ISO-CR0-250-AL-NB	ISO250	256.0	261.0	3.9	8.0
ISO-CR0-320-AL	ISO-CR0-320-AL-NB	ISO320	311.2	316.5	5.5	14.0
ISO-CR0-400-AL	ISO-CR0-400-AL-NB	ISO400	392.9	398.0	5.5	14.0

中心支架密封圈带保持架 ISO Centering Rings with O-Rings and Spacers

中心环材料 Centering Ring Material :
SS 304 SS 316L 铝 Aluminum

O 型圈 O-ring Material : FKM FFKM

保持架材料 Spacer Material : 铝 Aluminum

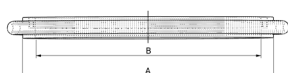


Part Number (ss304)	Part Number (Aluminum)	Size	A	B	C	D
ISO-CROS-63	ISO-CR0-63-AL	ISO63	94.0	68.0	3.8	8.0
ISO-CROS-80	ISO-CR0-80-AL	ISO80	109.0	81.0	3.8	8.0
ISO-CROS-100	ISO-CR0-100-AL	ISO100	128.0	100.0	3.8	8.0
ISO-CROS-160	ISO-CR0-160-AL	ISO160	179.0	151.0	3.8	8.0
ISO-CROS-200	ISO-CR0-200-AL	ISO200	239.0	210.0	3.8	8.0
ISO-CROS-250	ISO-CR0-250-AL	ISO250	287.0	256.0	3.8	8.0
ISO-CROS-320	ISO-CR0-320-AL	ISO320	344.0	311.2	5.6	14.0
ISO-CROS-400	ISO-CR0-400-AL	ISO400	428.8	392.8	5.6	14.0

ISO

中心支架密封圈带滤网 ISO Screened Centering Rings with O-Rings

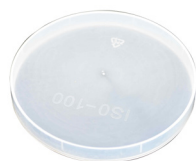
中心环材料 Centering Ring Material : SS 304
滤网材料 Screen Material : SS 304



Part Number (FKM)	Size	A	B
ISO-CROSC-63	ISO63	69.6	62.0
ISO-CROSC-80	ISO80	83.0	74.0
ISO-CROSC-100	ISO100	102.0	92.0
ISO-CROSC-160	ISO160	153.0	139.7

法兰塑料盖 ISO-K Flange Plastic Cap

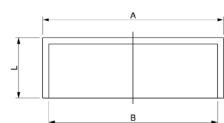
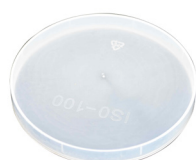
材料 Material : 塑料 PE



Part Number	Size	A	B	C
ISO-K-PC-63	ISO63	97.8	95.0	13.5
ISO-K-PC-80	ISO80	113.0	110.0	13.5
ISO-K-PC-100	ISO100	133.0	130.0	13.5
ISO-K-PC-160	ISO160	183.0	180.0	13.5
ISO-K-PC-200	ISO200	242.0	239.2	15.0
ISO-K-PC-250	ISO250	293.4	290.0	15.0
ISO-K-PC-320	ISO320	373.9	370.5	15.0
ISO-K-PC-400	ISO400	454.2	450.8	15.0

法兰塑料盖 ISO-F Flange Plastic Cap

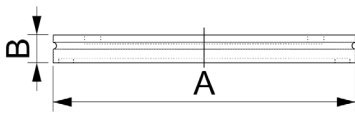
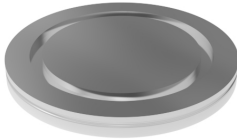
材料 Material : 塑料 PE



Part Number	Size	A	B	C
ISO-F-PC-63	ISO63-F	133.0	130.0	13.3
ISO-F-PC-80	ISO80-F	148.0	145.0	13.3
ISO-F-PC-100	ISO100-F	167.5	165.0	13.6
ISO-F-PC-160	ISO160-F	228.0	225.0	17.2
ISO-F-PC-200	ISO200-F	228.0	288.0	18.2
ISO-F-PC-250	ISO250-F	348.0	335.0	10.4
ISO-F-PC-320	ISO320-F	428.0	425.0	17.3
ISO-F-PC-400	ISO400-F	453.0	450.0	18.3

法兰盲板 ISO-K Blank Flanges

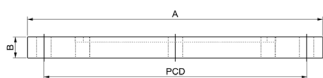
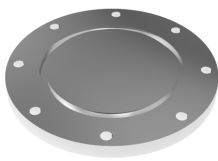
材料 Material : SS 304 SS 316L 铝 Aluminum



Part Number	Size	A	B
ISOK-BL-63	IS063	95.0	11.9
ISOK-BL-80	IS080	110.0	11.9
ISOK-BL-100	IS0100	130.0	11.9
ISOK-BL-160	IS0160	180.1	11.9
ISOK-BL-200	IS0200	240.0	12.0
ISOK-BL-250	IS0250	290.0	12.0
ISOK-BL-320	IS0320	370.1	17.0
ISOK-BL-400	IS0400	450.1	17.0
ISOK-BL-500	IS0500	549.9	17.0
ISOK-BL-630	IS0630	690.1	22.1

法兰盲板 ISO-F Blank Flanges

材料 Material : SS 304 SS 316L 铝 Aluminum

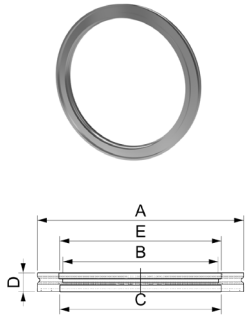


Part Number	Size	A	B	Bolt Holes	PCD
ISOF-BL-63	IS063	130.0	11.9	4	110.0
ISOF-BL-80	IS080	145.0	11.9	8	125.0
ISOF-BL-100	IS0100	165.0	11.9	8	145.0
ISOF-BL-160	IS0160	225.0	16.0	8	200.0
ISOF-BL-200	IS0200	285.0	16.0	12	260.0
ISOF-BL-250	IS0250	335.0	16.0	12	310.0
ISOF-BL-320	IS0320	425.0	20.0	12	395.0
ISOF-BL-400	IS0400	510.0	20.1	16	480.1
ISOF-BL-500	IS0500	610.1	20.1	16	579.9
ISOF-BL-630	IS0630	750.1	23.9	20	720.1

ISO

焊接法兰 ISO-kBored Flanges

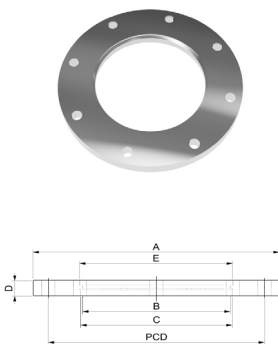
材料 Material : SS 304 SS 316L 铝 Aluminum



Part Number	Size	Normal Tube OD	A	B	C	D	E
IS0K-BF-63	IS063	2.5"	95.0	60.2	63.8	11.9	70.1
IS0K-BF-80	IS080	3"	110.0	72.9	76.5	11.9	83.0
IS0K-BF-100	IS0100	4"	130.0	98.3	101.9	11.9	102.7
IS0K-BF-160	IS0160	6"	180.1	149.1	152.9	11.9	153.0
IS0K-BF-200	IS0200	8"	240.0	197.1	203.7	11.9	213.2
IS0K-BF-250	IS0250	10"	290.0	247.7	254.5	11.9	261.0
IS0K-BF-320	IS0320	12"	370.1	296.8	305.6	17.0	318.0
IS0K-BF-320-1	IS0320	12.75"	370.1	318.0	324.4	17.0	318.0
IS0K-BF-400	IS0400	16"	450.1	396.8	406.9	17.0	400.0
IS0K-BF-500	IS0500	20"	549.9	498.4	508.5	17.0	501.0
IS0K-BF-630	IS0630	24"	690.1	604.8	610.1	22.1	651.0

焊接法兰 ISO-F Bored Flanges

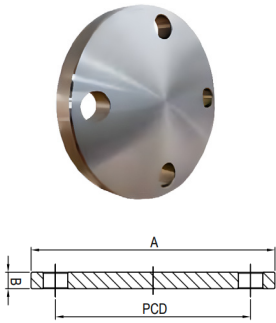
材料 Material : SS 304 SS 316L 铝 Aluminum



Part Number	Size	A	B	C	D	E	PCD
IS0F-BF-63	IS063	130.0	61.9	63.8	11.9	69.9	110.0
IS0F-BF-80	IS080	145.0	74.6	76.5	11.9	83.0	125.0
IS0F-BF-100	IS0100	165.1	99.3	101.9	11.9	102.7	145.0
IS0F-BF-160	IS0160	225.0	149.2	152.9	16.0	153.0	200.0
IS0F-BF-200	IS0200	285.0	200.0	203.7	16.0	213.2	260.0
IS0F-BF-250	IS0250	335.0	250.8	254.5	16.0	261.4	310.0
IS0F-BF-320	IS0320	425.0	318.0	324.4	20.0	318.0	395.0
IS0F-BF-400	IS0400	510.0	396.8	406.9	20.1	400.0	480.1
IS0F-BF-500	IS0500	610.0	498.4	508.5	20.1	501.0	579.9
IS0F-BF-630	IS0630	750.1	604.8	610.1	23.9	610.1	720.1

法兰盲板 ASA Blank Flanges

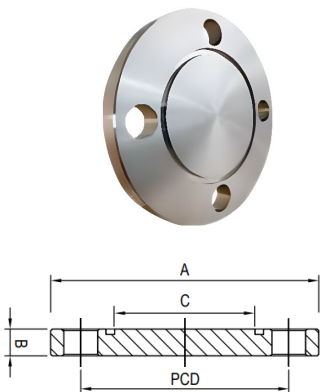
材料 Material : SS 304 SS 316L 铝 Aluminum



Part Number	Size	A	B	Bolt Holes	PCD
ASA-BL-450	4.25"	108.0	12.7	4-φ 16	79.5
ASA-BL-500	5"	127.0	12.7	4-φ 16	98.6
ASA-BL-600	6"	152.4	12.7	4-φ 19.1	120.7
ASA-BL-750	7.5"	190.5	12.7	4-φ 19.1	152.4
ASA-BL-900	9"	228.6	12.7	8-φ 19.1	190.5
ASA-BL-1100	11"	279.4	19.1	8-φ 20.6	241.3
ASA-BL-1350	13.5"	342.9	19.1	8-φ 20.6	298.5
ASA-BL-1600	16"	406.4	19.1	8-φ 20.6	362.0

法兰盲板带槽 ASA Blank Flanges With O-ring Groove

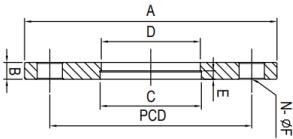
材料 Material : SS 304 SS 316L 铝 Aluminum



Part Number	Size	A	B	C	Bolt Holes	PCD
ASA-BL-450-G	4.25"	108.0	12.7	41.2	4-φ 16	79.5
ASA-BL-500-G	5"	127.0	12.7	66.6	4-φ 16	98.6
ASA-BL-600-G	6"	152.4	12.7	88.9	4-φ 19.1	120.7
ASA-BL-750-G	7.5"	190.5	12.7	117.4	4-φ 19.1	152.4
ASA-BL-900-G	9"	228.6	12.7	152.4	8-φ 19.1	190.5
ASA-BL-1100-G	11"	279.4	19.1	203.2	8-φ 20.6	241.3
ASA-BL-1350-G	13.5"	342.9	19.1	254.0	8-φ 20.6	298.5
ASA-BL-1600-G	16"	406.4	19.1	304.8	12-φ 20.6	362.0

钻孔法兰 ASA Bored Flanges

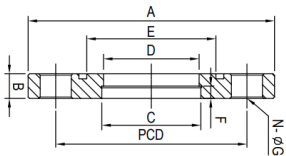
材料 Material : SS 304 SS 316L 铝 Aluminum



Part Number	Size	A	B	C	D	E	Bolt Holes-	PCD
ASA-BF-425X100	4.25"	107.9	12.7	25.7	23.8	6.4	4-φ16	79.5
ASA-BF-425X150	4.25"	107.9	12.7	38.4	36.6	6.4	4-φ16	79.5
ASA-BF-500X150	4.5"	127.0	12.7	38.4	36.6	6.4	4-φ16	98.5
ASA-BF-500X200	4.5"	127.0	12.7	51.1	49.3	6.4	4-φ16	98.5
ASA-BF-500X250	5"	127.0	12.7	63.8	62.0	6.4	4-φ16	98.6
ASA-BF-600X200	6"	152.4	12.7	51.1	49.3	6.4	4-φ19.1	120.6
ASA-BF-600X250	6"	152.4	12.7	63.8	62.0	6.4	4-φ19.1	120.6
ASA-BF-600X300	6"	152.4	12.7	76.5	74.7	6.4	4-φ19.1	120.6
ASA-BF-750X300	7.5"	190.5	12.7	76.5	74.7	6.4	4-φ19.1	152.4
ASA-BF-750X400	7.5"	190.5	12.7	101.9	99.6	6.4	4-φ19.1	152.4
ASA-BF-900X400	9"	228.6	12.7	101.9	99.6	6.4	8-φ19.1	190.5
ASA-BF-900X600	9"	228.6	12.7	152.9	150.4	6.4	8-φ19.1	190.5
ASA-BF-1100X600	11"	279.4	19.1	152.9	150.1	9.7	8-φ20.6	241.3
ASA-BF-1100X800	11"	279.4	19.1	203.7	200.2	9.7	8-φ20.6	241.3
ASA-BF-1350X800	13.5"	342.9	19.1	203.7	200.4	9.7	8-φ20.6	298.5
ASA-BF-1600X1000	16"	406.4	19.1	254.5	251.0	9.7	12-φ20.6	362.0
ASA-BF-1600X1200	16"	406.4	19.1	305.3	301.8	9.7	12-φ20.6	362.0

钻孔法兰带槽 ASA Bored Flanges With O-ring Groove

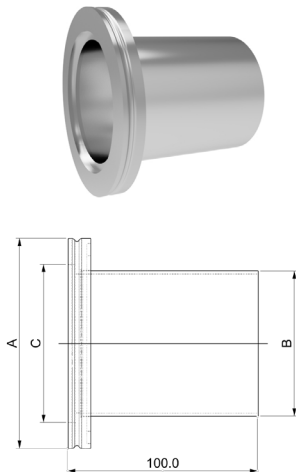
材料 Material : SS 304 SS 316L 铝 Aluminum



Part Number	Size	A	B	C	D	E	F	Bolt Holes-	PCD
ASA-BF-425X100-G	4.25"	107.9	12.7	25.7	23.8	41.2	6.3	4-φ16.0	79.5
ASA-BF-425X150-G	4.25"	107.9	12.7	38.4	36.6	41.2	6.3	4-φ16.0	79.5
ASA-BF-500X100-G	5"	127.0	12.7	25.7	23.9	66.6	6.3	4-φ16.0	98.6
ASA-BF-500X150-G	5"	127.0	12.7	38.4	36.6	66.6	6.3	4-φ16.0	98.6
ASA-BF-500X200-G	5"	127.0	12.7	51.1	49.3	66.6	6.3	4-φ16.0	98.6
ASA-BF-500X250-G	5"	127.0	12.7	63.8	62.0	66.6	6.3	4-φ16.0	98.6
ASA-BF-600X200-G	6"	152.4	12.7	51.1	49.3	88.9	6.3	4-φ19.1	120.7
ASA-BF-600X300-G	6"	152.4	12.7	76.5	74.7	88.9	6.3	4-φ19.1	120.6
ASA-BF-600X350-G	6"	152.4	12.7	89.2	87.4	88.9	6.3	4-φ19.1	120.6
ASA-BF-750X300-G	7.5"	190.5	12.7	76.5	74.7	117.4	6.3	4-φ19.1	152.4
ASA-BF-750X400-G	7.5"	190.5	12.7	101.9	99.6	117.4	6.3	4-φ19.1	152.4
ASA-BF-900X400-G	9"	228.6	12.7	101.9	99.6	152.4	6.3	8-φ19.1	190.5
ASA-BF-900X600-G	9"	228.6	12.7	152.9	150.4	152.4	6.3	8-φ19.1	190.5
ASA-BF-1100X600-G	11"	279.4	19.1	152.9	150.1	203.2	9.7	8-φ20.6	241.3
ASA-BF-1100X800-G	11"	279.4	19.1	203.7	200.2	203.2	9.7	8-φ20.6	241.3
ASA-BF-1350X800-G	13.5"	342.9	19.1	203.7	200.4	254.0	9.7	8-φ20.6	298.5
ASA-BF-1350X1000-G	13.5"	342.9	19.1	254.5	251.0	254.0	9.7	8-φ20.6	298.5
ASA-BF-1600X1000-G	16"	406.4	19.1	254.5	251.0	304.8	9.7	8-φ20.6	362.0
ASA-BF-1600X1200-G	16"	406.4	19.1	305.3	301.8	304.8	9.7	8-φ20.6	362.0

半截法兰 ISO-K Half Nipples

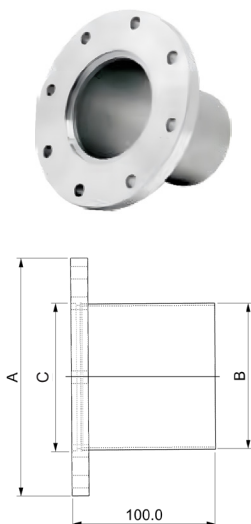
材料 Material : SS 304 SS 316L 铝 Aluminum



Part Number	Flange Size	A	B	C
ISOK-HN-63	IS063	95.0	63.5	70.0
ISOK-HN-80	IS080	110.0	76.2	83.0
ISOK-HN-100	IS0100	130.0	101.6	102.7
ISOK-HN-160	IS0160	180.1	152.4	153.0
ISOK-HN-200	IS0200	240.0	203.2	213.2
ISOK-HN-250	IS0250	290.0	254.0	261.2
ISOK-HN-320	IS0320	370.1	324.0	318.0

半截法兰 ISO-F Half Nipples

材料 Material : SS 304 SS 316L 铝 Aluminum

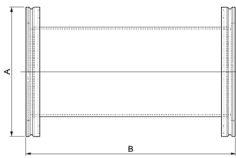


Part Number	Flange Size	A	B	C
ISOF-HN-63	IS063	130.0	63.5	69.9
ISOF-HN-80	IS080	145.0	76.2	83.0
ISOF-HN-100	IS0100	165.1	101.6	102.7
ISOF-HN-160	IS0160	225.0	152.4	153.0
ISOF-HN-200	IS0200	285.0	203.2	213.2
ISOF-HN-250	IS0250	335.0	254.0	261.4
ISOF-HN-320	IS0320	425.0	324.0	318.0

ISO

直通法兰 ISO-K Full Nipples

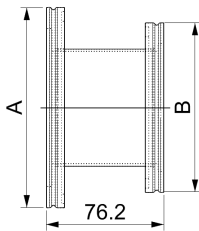
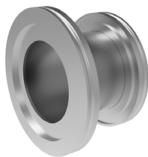
材料 Material : SS 304 SS 316L 铝 Aluminum



Part Number	Flange Size	A	B
ISOK-FN-63	ISO63	ISO63	165.1
ISOK-FN-63-1	ISO63	ISO63	175.8
ISOK-FN-80	ISO80	ISO80	177.8
ISOK-FN-80-1	ISO80	ISO80	196.1
ISOK-FN-100	ISO100	ISO100	209.8
ISOK-FN-100-1	ISO100	ISO100	215.9
ISOK-FN-160	ISO160	ISO160	273.3
ISOK-FN-160-1	ISO160	ISO160	275.8

直通缩径法兰 ISO-K Straight Reducing Nipples

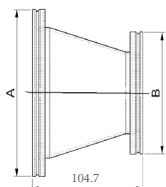
材料 Material : SS 304 SS 316L 铝 Aluminum



Part Number	Flange Size	A	B
ISOK-SRN-80x63	ISO80x63	ISO80	ISO63
ISOK-SRN-100x63	ISO100x63	ISO100	ISO63
ISOK-SRN-100x80	ISO100x80	ISO100	ISO80
ISOK-SRN-160x63	ISO160x63	ISO160	ISO63
ISOK-SRN-160x80	ISO160x80	ISO160	ISO80
ISOK-SRN-160x100	ISO160x100	ISO160	ISO100

锥形缩径法兰 ISO-K Straight Reducing Nipples

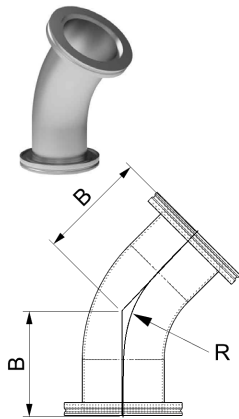
材料 Material : SS 304 SS 316L 铝 Aluminum



Part Number	Flange Size	A	B
ISOK-CRN-80x63	ISO80x63	ISO80	ISO63
ISOK-CRN-100x63	ISO100x63	ISO100	ISO63
ISOK-CRN-100x80	ISO100x80	ISO100	ISO80

45 度弯头 ISO-K45° Elbows

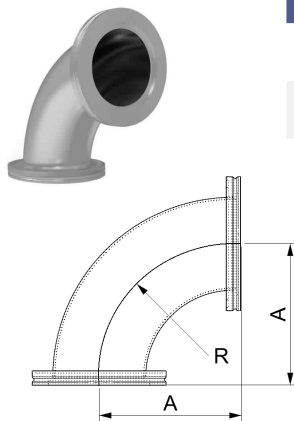
材料 Material : SS 304 SS 316L 铝 Aluminum



Part Number	Flange Size	A	R
ISOK-45EL-63	IS063	82.3	95.3
ISOK-45EL-80	IS080	100.0	114.3
ISOK-45EL-100	IS0100	128.5	152.4

90 度弯头 ISO-K90° Elbows

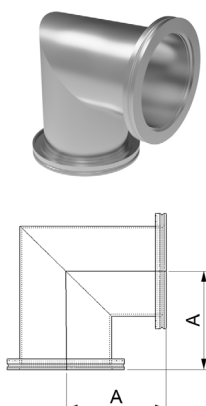
材料 Material : SS 304 SS 316L 铝 Aluminum



Part Number	Flange Size	A	R
ISOK-90EL-63	IS063	101.6	95.3
ISOK-90EL-80	IS080	120.6	114.3
ISOK-90EL-100	IS0100	158.7	152.4

斜接 90 度弯头 S0-k90° Mitered Elbows

材料 Material : SS 304 SS 316L 铝 Aluminum

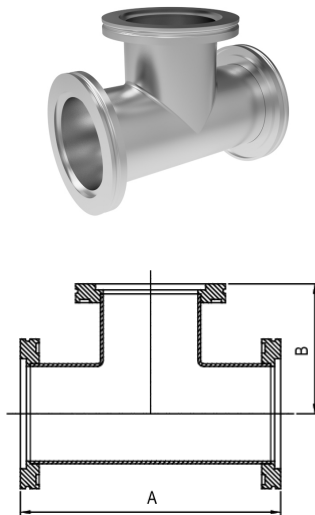


Part Number	Flange Size	A
ISOK-90MEL-63	IS063	82.6
ISOK-90MEL-63-1	IS063	87.9
ISOK-90MEL-80	IS080	88.9
ISOK-90MEL-80-1	IS080	108.0
ISOK-90MEL-100	IS0100	104.9
ISOK-90MEL-100-1	IS0100	108.0
ISOK-90MEL-160	IS0160	138.0
ISOK-90MEL-160-1	IS0160	160.2

ISO

正三通 ISO-K Equal Tees

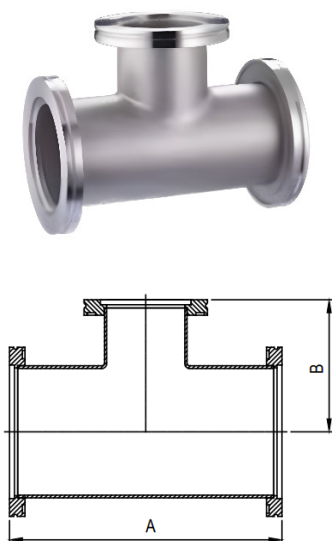
材料 Material : SS 304 SS 316L



Part Number	Flange Size	A	B
IS0K-ET-63	IS063	165.0	82.5
IS0K-ET-63-1	IS063	176.0	88.0
IS0K-ET-80	IS080	177.8	88.9
IS0K-ET-80-1	IS080	196.0	98.0
IS0K-ET-100	IS0100	209.4	104.7
IS0K-ET-100-1	IS0100	216.0	108.0
IS0K-ET-160	IS0160	266.6	133.3

缩径三通 ISO-K Reducing Tees

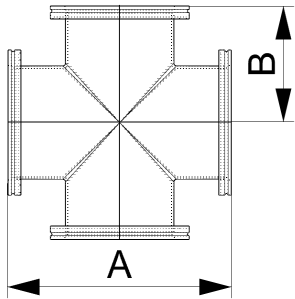
材料 Material : SS 304 SS 316L



Part Number	Flange Size	A	B
IS0K-RT-80x63	IS080/IS063	177.7	88.9
IS0K-RT-100x63	IS0100/IS063	209.7	101.6
IS0K-RT-100x80	IS0100/IS080	209.7	101.6
IS0K-RT-160x63	IS0160/IS063	266.6	126.9
IS0K-RT-160x80	IS0160/IS080	266.6	126.9
IS0K-RT-160x100	IS0160/IS0100	266.6	130.3

四通 ISO-K4-Way Crosses

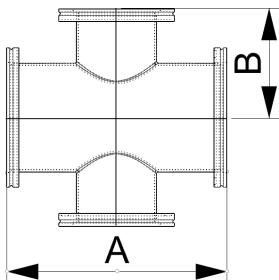
材料 Material : SS 304 SS 316L 铝 Aluminum



Part Number	Flange Size	A	B
IS0K-4C-63	IS063	165.0	82.5
IS0K-4C-80	IS080	177.8	88.9
IS0K-4C-80-1	IS080	196.0	98.0
IS0K-4C-100	IS0100	209.4	104.7
IS0K-4C-100-1	IS0100	216.0	108.0
IS0K-4C-160	IS0160	266.6	133.3

缩径四通 ISO-K4-Way Reducing Crosses

材料 Material : SS 304 SS 316L 铝 Aluminum

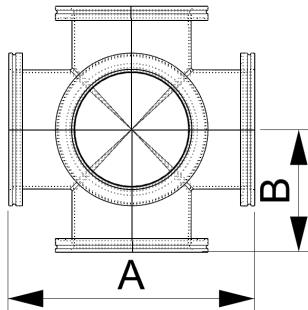


Part Number	Flange Size	A	B
IS0K-4RC-80x63	IS080/IS063	177.7	88.9
IS0K-4RC-100x63	IS0100/IS063	209.7	101.6
IS0K-4RC-100x80	IS0100/IS080	209.7	101.6
IS0K-4RC-160x63	IS0160/IS063	266.6	127.0
IS0K-4RC-160x80	IS0160/IS080	266.6	127.0
IS0K-4RC-160x100	IS0160/IS0100	266.6	130.3

ISO

五通 ISO-K5-Way Crosses

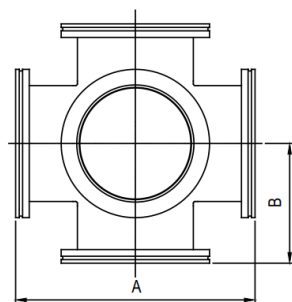
材料 Material : SS 304 SS 316L



Part Number	Flange Size	A	B
ISO-K-5C-63	ISO63	165.0	82.5
ISO-K-5C-80	ISO80	177.8	88.9
ISO-K-5C-100	ISO100	209.8	104.9
ISO-K-5C-160	ISO160	266.6	133.3

六通 ISO-K6-Way Crosses

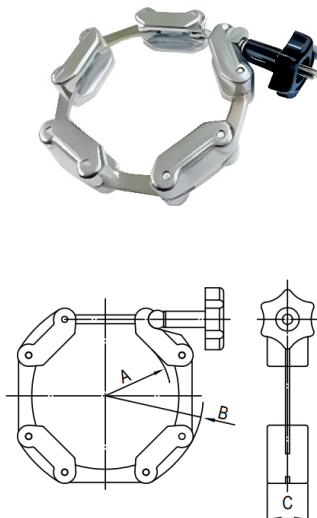
材料 Material : SS 304 SS 316L



Part Number	Flange Size	A	B
ISO-K-6C-63	ISO63	165.0	82.5
ISO-K-6C-80	ISO80	177.8	88.9
ISO-K-6C-100	ISO100	209.8	104.9
ISO-K-6C-160	ISO160	266.6	133.3

链式卡箍一 NW Chain Clamps Type 1

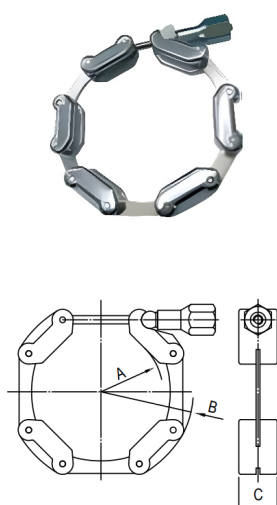
阀体材料 Body Material : 铝 Aluminum
螺栓材料 Bolt Material : 塑料 Plastic



Part Number	Size	A	B	C
NW-CC1-16	NW16	22.0	56.0	20.5
NW-CC1-25	NW25	32.0	66.0	20.5
NW-CC1-40	NW40	46.0	80.0	20.5
NW-CC1-50	NW50	69.0	100.0	20.5
NW-CC1-63	NW63	78.0	112.0	20.5

链式卡箍二 NW Chain Clamps Type 2

阀体材料 Body Material : SS 304
螺栓材料 Bolt Material : SS 304



Part Number	Size	A	B	C
NW-CC2-16	NW16	22.0	56.0	20.5
NW-CC2-25	NW25	32.0	66.0	20.5
NW-CC2-40	NW40	46.0	80.0	20.5
NW-CC2-50	NW50	69.0	100.0	20.5
NW-CC2-63	NW63	78.0	112.0	20.5

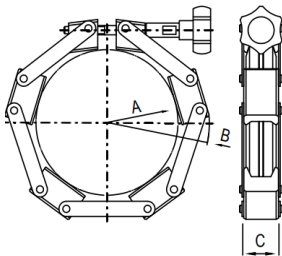
ISO

链式卡箍一 NW chain clamps Type 1

链条材料 Body Material : 铝 Aluminum
螺栓材料 Bolt Material : 塑料 Plastic

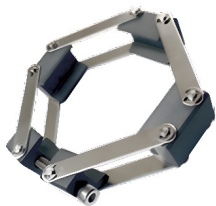


Part Number	Size	A	B	C
NW-CC1-80	NW80	117.1	153.0	30.0
NW-CC1-100	NW100	136.5	171.7	30.0
NW-CC1-160	NW160	197.9	231.7	30.0

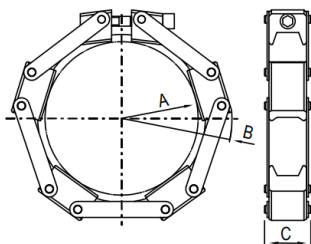


链式卡箍二 NW chain clamps Type 2

链条材料 Body Material : 铝 Aluminum
螺栓材料 Bolt Material : SS 304

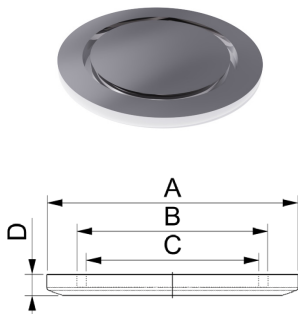


Part Number	Size	A	B	C
NW-CC2-80	NW80	100.0	165.0	38.0
NW-CC2-100	NW100	122.0	185.0	38.0
NW-CC2-160	NW160	174.0	235.0	38.0



盲板法兰 NW Blank Flanges

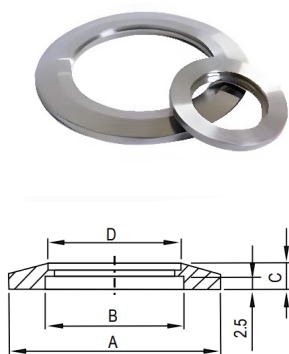
材料 Material : SS 304



Part Number	Flange Size	A	B	C	D
NW-BL-63	NW63	87.0	70.2	64.0	5.0
NW-BL-80	NW80	114.0	83.0	73.0	11.0
NW-BL-100	NW100	134.0	102.0	92.0	11.0
NW-BL-160	NW160	190.0	153.2	143.0	11.0

钻孔法兰 NW Bored Flanges

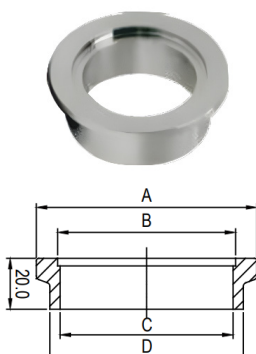
材料 Material : SS 304



Part Number	Flange Size	A	B	C	D
NW-BF-63	NW63	87.0	70.0	5.0	63.7
NW-BF-80	NW80	114.0	83.0	11.0	76.4
NW-BF-100	NW100	134.0	102.0	11.0	101.8
NW-BF-160	NW160	190.0	153.0	11.0	152.9

对焊法兰 NW Butt Weld Flanges

材料 Material : SS 304



Part Number	Flange Size	A	B	C	D	Tube Size
NW-BWF-80	NW80	114.0	83.1	83.1	89.1	80A 10S
NW-BWF-80-1	NW80	114.0	83.1	84.9	89.1	80A 5S
NW-BWF-100	NW100	134.0	102.2	108.3	114.3	100A 10S
NW-BWF-100-1	NW100	134.0	102.2	110.1	114.3	100A 5S
NW-BWF-160	NW160	190.0	153.2	158.4	165.2	150A 10S
NW-BWF-160-1	NW160	190.0	153.2	159.6	165.2	150A 5S

ISO

插焊法兰 NW Socket Weld Flanges

材料 Material : SS 304



Figure1

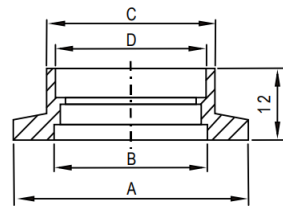
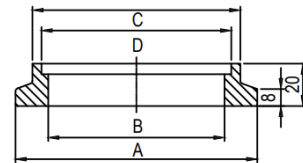


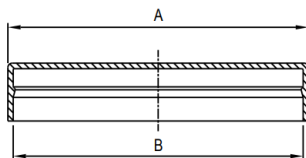
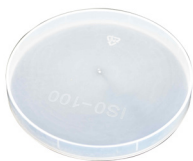
Figure2



Part Number	Flange Size	A	B	C	D	Figure
NW-SWF-63	NW63	87.0	70.0	67.5	63.7	1
NW-SWF-80	NW80	114.0	83.1	98.0	89.5	2
NW-SWF-100	NW100	134.0	102.2	114.3	110.1	2
NW-SWF-160	NW160	190.0	153.0	174.0	165.5	2

法兰塑料盖 NW Flange Plastic Cap

材料 Material : 塑料 PE



Part Number	Flange Size	A	B
NW-PC-63	NW63	89.5	87.5
NW-PC-80	NW80	116.5	114.5
NA-PC-100	NW100	136.5	134.5